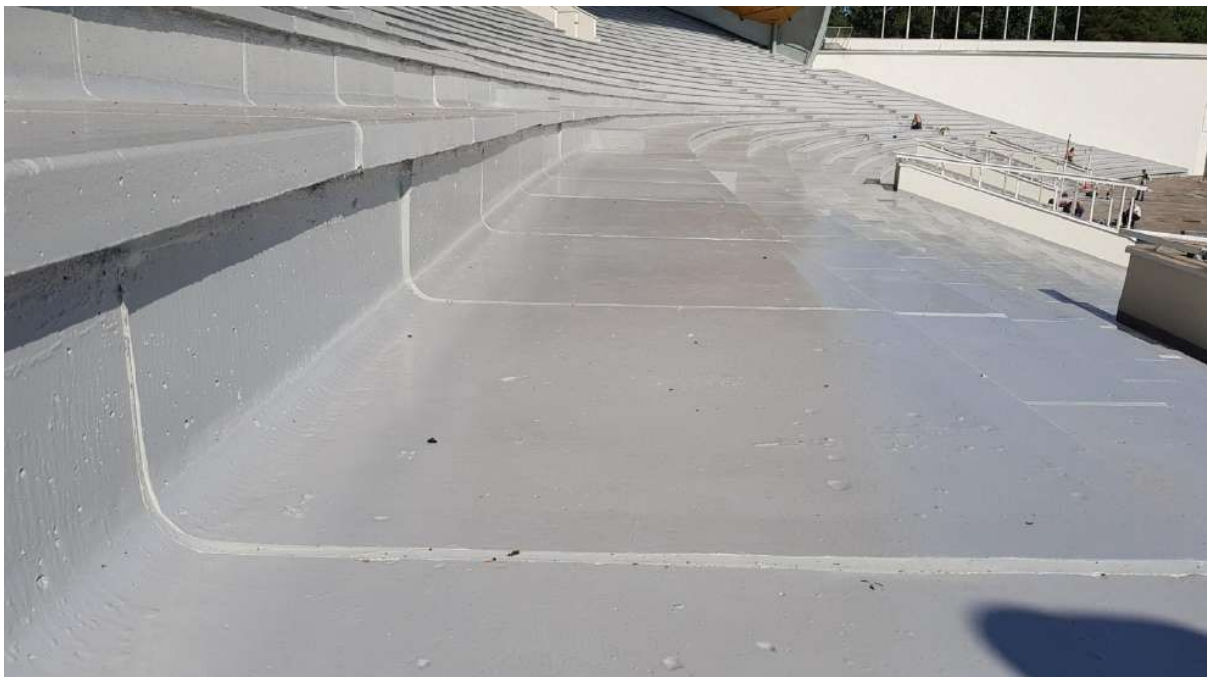




TECMA PAINT PU

POLYURETHANE COATING FOR OUTDOOR PROTECTION



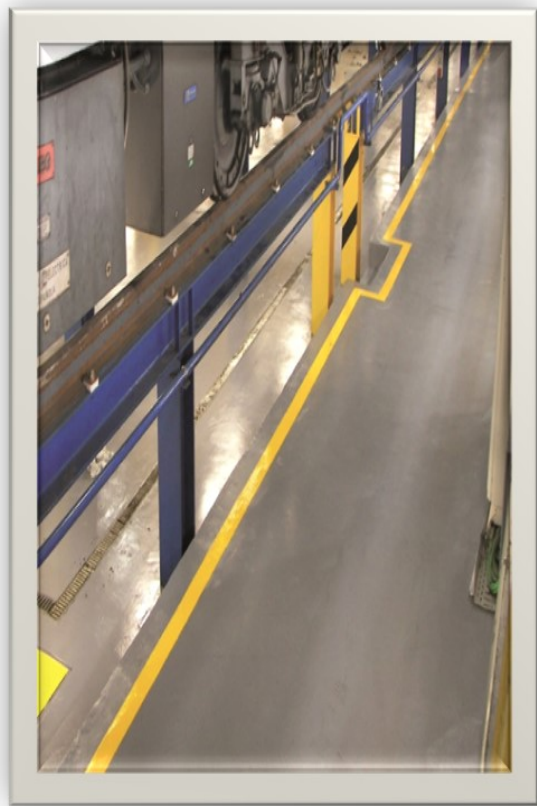
Vilnius, Lithuania; Stadium steps coated with Tecma Paint PU

- **ALIPHATIC POLYURETHANE COATING FOR OUTDOOR USE**
- **USED ON HORIZONTAL AND VERTICAL SURFACES**
- **EXCELLENT RESISTANCE TO UV**
- **IMPERVIOUS TO OILS, GREASES AND AQUEOUS SOLUTIONS**
- **IMPACT AND ABRASION RESISTANT**
- **FACILITATES EASY CLEANING OF STADIUM & ARENA STEPS, ETC**
- **IDEAL FOR USE IN INDOOR OR OUTDOOR CARPARKS**
- **SUITABLE FOR GARAGES, WAREHOUSES, FACTORIES**
- **VOC's DIRECTIVE COMPLIANT**
- **WEATHER FRIENDLY OUTDOORS TOP COAT FOR EPOXY SYSTEMS**

TECMA PAINT BPU



Ceramic Tiles



Factory Walkway

CLEAR TRANSPARENT RIGID POLYURETHANE PROTECTION COATING

Tecma Paint BPU is an aliphatic clear coating, suitable for use indoors and outdoors and will resist UV rays, hail, rain and snow for many years.

Its excellent chemical resistance to acidic or alkaline solutions and solvents protects against dirt and contamination and allows for easy cleaning of treated surfaces.

It is used as a protection for epoxy or polyurethane coatings, as a finish coat; is resistant to abrasion by foot and vehicular traffic. Tough and long lasting.

MSP COATINGS LTD

www.mspcoatings.ie info@mspcoatings.ie 00 353 (0)91 44 55 44
10, Kilkerrin Park, Liosban, Tuam Road, Galway, Ireland H91 E2V6